



BaselineRx

NUTRIENT PRESCRIPTIONS FROM

AGRONOMY 365

Powered by Next Level Ag



Deep dive into the intricacies of your soil and receive tailored recommendations to set the optimum fertility foundation for your upcoming growing season. Our expert agronomists develop field zones, run in-depth soil tests, and create nutrient prescriptions that best suit your unique soil compositions. **Our goal is to save you input costs by applying with ultimate efficiency.**

BaselineRx paired with Agronomy 365 is the ultimate data-driven fertility program.

Agronomy 365 takes the guesswork out of your in-season fertility with soil and tissue growth stage samples and timely reports, charts, and recommendations on the Agronomy 365 Dashboard. **BaselineRx prescriptions pre-season build a base fertility program for the crop ahead, and allow us to budget for potential in-season needs.**

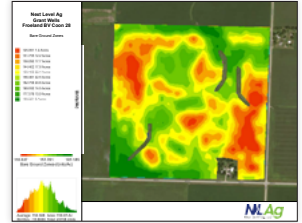




1 We create zones for each field and collect soil samples.

We use NIR imagery and topography, soil composition and water flow patterns to determine unique zones within your fields. Five to fifteen soil sample cores are taken from each zone at our standard 0-6" surface depth, but can be customized to the depth of your preference.

This step is crucial in determining the most effective and efficient application rates, as a Zone 1 will react and hold nutrients differently than a Zone 10.



2 The soil undergoes thorough testing.

We combine University Standard testing metrics with our cutting-edge Indicator Complete soil test to gain full-picture insight into the unique intricacies of your soil.

University Standard Test:

**OM, Nitrate, P, K, S,
Ca, Mg, Zn, Mn, Fe, Cu,
B, Na, pH, Buffer pH,
EC, CEC**

Next Level Ag Indicator Complete Test:

**VAST, SLAN, HT3, Ammoniacal N,
Total Organic N, Total Organic
Carbon, H3A Extract Package, nutrient
relationships & soil health score**

The most complete look at the nutrient levels in your soil available that allows us to tap into new nutrient efficiencies. Take nitrogen for example; this test clarifies soil N tie-up potential, recognizes soil late-season N release potential, identifies N mineralization potential, classifies crop rooting potential, and indicates soil N holding capacity. Unique potentials are also reported for all other major nutrients using this same test.



3 We discuss your goals and needs.

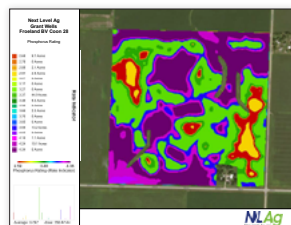
Our team will connect with you to understand your goals for the upcoming year, crop performance and results from previous years, your preferred method of application, products you have available to apply and more. These preferences are crucial for us to be able to develop a fertility recommendation that best suits your needs.

We also gather yield goal data through satellite imagery. Setting realistic yield goals based on biomass history allows us to create fertility recommendations that are the most efficient for each zone.



4 We create your BaselineRx prescription.

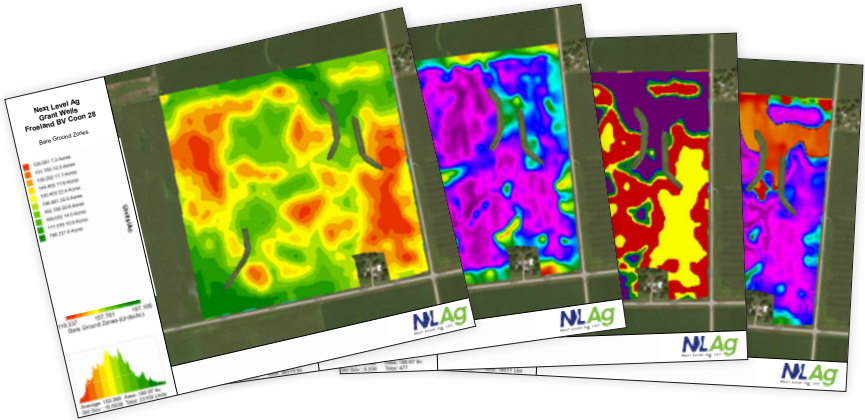
We use your preferences and the results from your soil tests to give you recommendations for variable rate N, P, K, Ca and S applications, and work with you to create your unique BaselineRx prescription.



5 You see results.

Utilize the insights from your BaselineRx prescription to determine unique seeding and nutrient rates for your fields, and set yourself up for improvements in fertilizer efficiency, performance and your bottom line.





BaselineRx + AGRONOMY 365

Pair BaselineRx with your
Agronomy 365 subscription.

Zone Mapping & Prescriptions: \$6.50/acre
Seed & Fertilizer Prescriptions: \$3.00/acre
Indicator Complete Soil Testing: \$74.00/sample



Interested in BaselineRx?

Contact Tyler Peterson
tylerp@nextlevelag.com

